



Seedmech

# THINK PLANT BREEDING

 **WINTERSTEIGER**  
Thinking about tomorrow.

# We accelerate global seed development to secure sustainable farming.



## Mission

We serve our customers by providing an innovative environment to enable fast and efficient plant breeding.



## Vision

Seedmech offers complete solutions for the entire seed development process. With our application knowledge and proactive services, we delight our worldwide customers along their entire value chain. We provide high quality solutions and help to fulfill the automation and data management needs through constant evolution.



## Purpose

To accelerate global seed development to secure sustainable farming.

# Superior agricultural research equipment

## Rely on the worldwide market leader

Agricultural research and field trials are under increasing pressure. Climate change, global population growth, bioenergy production, and soil erosion present complex challenges that require dependable, data-driven solutions.

Addressing these challenges takes deep application expertise and cutting-edge technology. Accuracy, reliability, and performance must continue to improve, along with the flexibility to adapt to individual customer requirements. By consistently meeting these demands, WINTERSTEIGER has become the global leader in field-trial technology.

### Content:

WINTERSTEIGER in fast motion _____	5
Full range for data management, scoring & care _____	7
Full range for plot harvest _____	8
Full range for precision planting _____	10
Full range for laboratory equipment _____	12
Highest quality _____	15
Custom solutions _____	16
Global sales & service network _____	17
References & partners _____	18



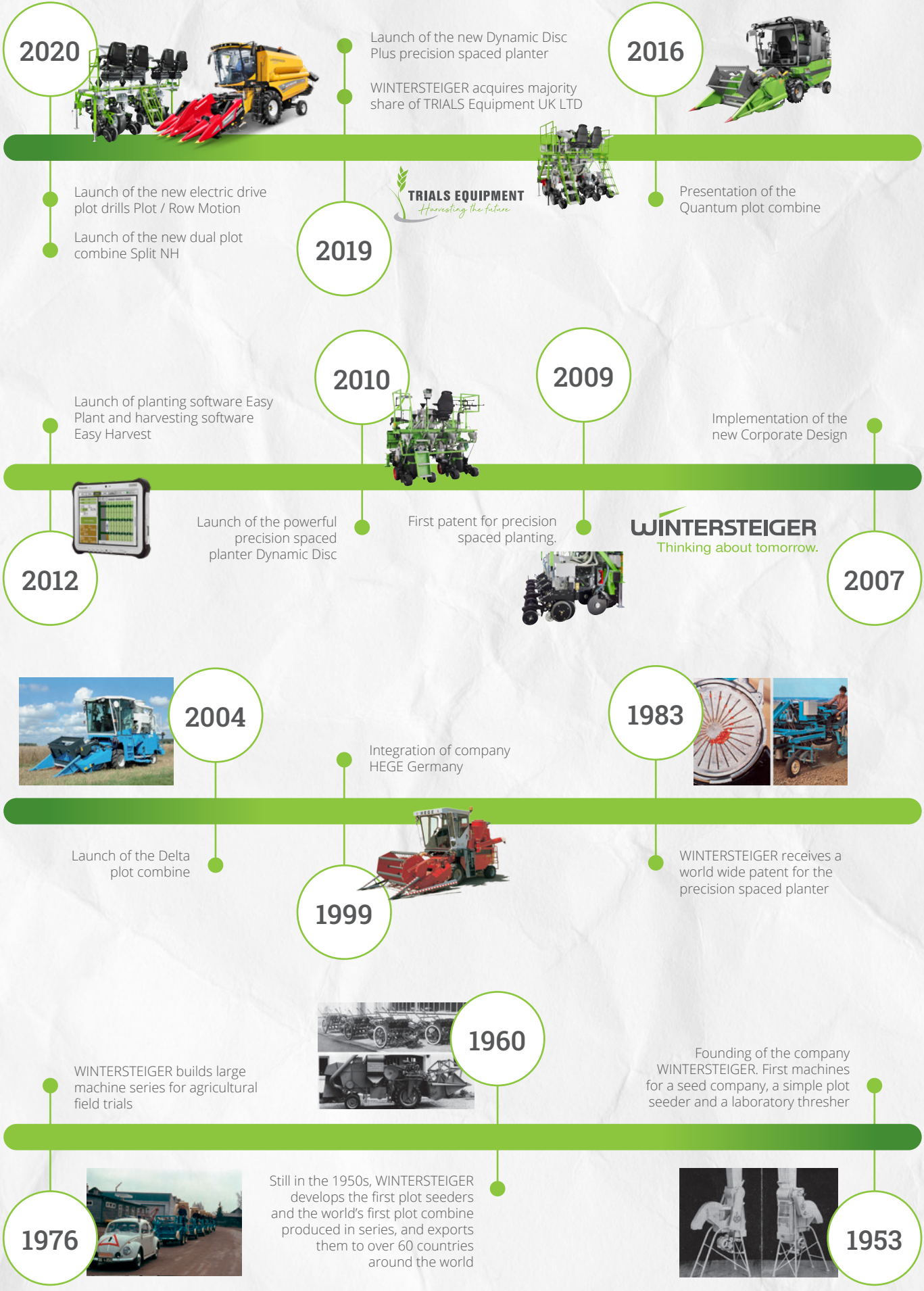
# From machine 1 to number one in the world

WINTERSTEIGER's history began in 1953 with Machine 1 – a simple seeder. From the very beginning, the company recognized the importance of precision, reliability, performance, and customer-specific flexibility. These priorities have remained consistent to this day, even as technology has evolved rapidly. That progress is driven by WINTERSTEIGER's long-standing commitment to innovation, with approximately 10 percent of annual revenue invested in research and development.

Today, WINTERSTEIGER offers an integrated product portfolio for field trials that supports the entire workflow – from planting and data management to harvesting. Developed by top engineers and built using state-of-the-art technology, these solutions are trusted by leading research institutions and companies around the world.

## WINTERSTEIGER in fast motion





2020



Launch of the new Dynamic Disc Plus precision spaced planter

WINTERSTEIGER acquires majority share of TRIALS Equipment UK LTD

2016



Presentation of the Quantum plot combine

Launch of the new electric drive plot drills Plot / Row Motion

Launch of the new dual plot combine Split NH

2019



2010

Launch of planting software Easy Plant and harvesting software Easy Harvest



2009

Implementation of the new Corporate Design

2012



Launch of the powerful precision spaced planter Dynamic Disc

First patent for precision spaced planting.

**WINTERSTEIGER**  
Thinking about tomorrow.

2007



2004



Launch of the Delta plot combine

Integration of company HEGE Germany

1983



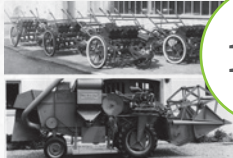
WINTERSTEIGER receives a world wide patent for the precision spaced planter

1999



WINTERSTEIGER builds large machine series for agricultural field trials

1960



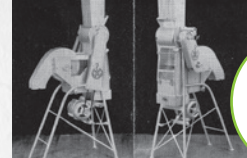
Founding of the company WINTERSTEIGER. First machines for a seed company, a simple plot seeder and a laboratory thresher

1976



Still in the 1950s, WINTERSTEIGER develops the first plot seeders and the world's first plot combine produced in series, and exports them to over 60 countries around the world

1953



# One-stop-shop partner



# Full range for data management, scoring & care

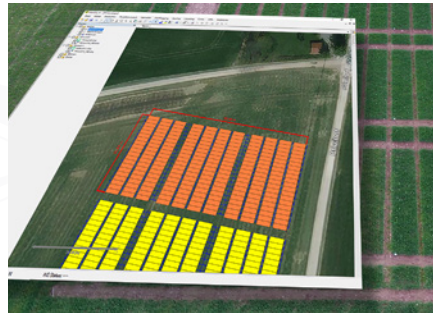
## PhenomeOne

End-to-end data management platform for breeding and variety testing.



## WINTERSTEIGER miniGIS

Exact plot planning for precise and efficient implementation.



## Easy Plant / Easy Harvest

Software for creation of a field plan and to carry out the planting and harvesting.



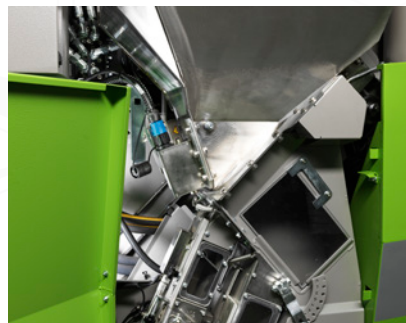
## Weighing systems

To measure weight, moisture, and hectoliter weight.



## NIR-Analysis

Infrared spectroscopy system solution for crop analysis.



## Plot Motion

Plot drill for fertilizing plots.



# Full range for plot harvest

## Plot combine

### Quantum Pro

Plot combine in the upper performance segment to meet the increasingly demanding challenges of state-of-the-art field research.



### Quantum Plus

Plot combine in the mid-range performance segment to meet the increasingly demanding challenges of state-of-the-art field research, from nursery to yield trial plots.



### Quantum Core

Entry model in the mid-range performance segment for state-of-the-art field research, from nursery to yield trial plots.



### Split NH

Powerful harvest of two plots in one operation.



### Split NH 255

Powerful harvesting of two plots in a single sweep – with an external width of only 255 cm.



### Alpha NH

The combine specialized for seed multiplication.



## Stationary thresher

### Classic Plus

Plot combine for mix-free harvest of nursery trials to small seed multiplication.



### Classic ST

Stationary thresher for all machine threshable crops.



## Other harvesters

### Cibus TRM

Tractor mounted plot harvester for silage maize and energy crops.



With more than 70 years of experience  
and over 4,500 plot combines sold  
worldwide, WINTERSTEIGER's  
expertise is proven in the field.



# Full range for precision planting

## Precision spaced planters

### Dynamic Disc Plus

Powerful, tractor-mounted multi-crop precision spaced planter.



### Dynamic Disc Core

Weight optimized and platform height reduced precision spaced planter.



### Dynamic Disc Plus 8R

Eight-row pull-type precision spaced planter for maximum effectiveness.



### Dynamic Disc Plus 18R

Eighteen-row precision spaced planter for simultaneously planting three 6-row plots.



### Plot Motion

Plot drills with electric sowing drive.



### Plot Motion S

Lightweight model based on the frame system of the Plotseed S and sowing system of the Plot Motion, with total weight from 650 kg.



### Row Motion

Single row seeder with electric sowing drive.



### Plot / Row Motion

Combined plot drills and single row seeder with electric sowing drive.



For more information please look at [www.wintersteiger.com](http://www.wintersteiger.com).

## Self-propelled unit

### Tool Carrier

Self-propelled unit for all WINTERSTEIGER seeders for planting, fertilizing, crop protection, and tilling.



## Hand-pushed plot drills

### Rowseed 1 R

Hand-pushed single row seeder.



## Seed drill automation

### Smart Feed

Automated seed supply.



Valuable grain deserves careful sowing.

# Full range for laboratory equipment

## Smart Lab Plus

Automated seed processing line for weighing, treatment, counting and filling seeds.



## Smart Lab Core

Automated seed processing line for counting and filling seeds.



## LD 350

Stationary thresher for all threshable crops.



## LD 180

Stationary thresher primarily for grain and small-grained crops.



## Hege 16

Laboratory thresher for cereals, rice, peas and small-grained seed.



## LS 230

Laboratory corn sheller for the gentle, complete shelling of corn.



## Hege 11

Liquid seed dresser for small quantities of seed (20 - 3000 g).



## Hege 14

Liquid seed dresser for larger quantities of seed (up to 15 kg).



## Hege 12

Liquid seed dresser for seed in magazines.



For more information please look at [www.wintersteiger.com](http://www.wintersteiger.com).

### Hege 44

Laboratory chopper for forage research plots, e.g. of all types of clover and grass, alfalfa and other forage plants.



### Hege 6

Sample divider for filling seed into bags or bowls.



### Hege 7

Sample divider for filling seed into magazines.



### MLN

Sample cleaner for all types of seed.



### SLN

Sample cleaner and sample sorter for all seed types.



### Seed Count R-60+

Seed counter designed for seed research with highest speed, precision and flexibility.



### Seed Count R-25+

Seed counter designed for seed research with highest speed, precision and flexibility.



### Seed Count S-60+

Seed counter with highest speed and precision for automatic calculation of the thousand grain weight.



### Seed Count S-25+

Seed counter with highest speed and precision for automatic calculation of the thousand grain weight.



### Seed Count & Fill S-60X

Seed counting and filling device for rapid and precise filling of large quantities of seeds.





5.0t

KONECRANES



Scan the QR code to get a glimpse of the Seedmech assembly process.

# Highest Quality



Quality "MADE IN AUSTRIA"



In-house engineering department



In-house manufacturing facility



Test center for proven quality

## A commitment to ongoing development

Every year, WINTERSTEIGER invests more than 10 percent of its revenue in research and development. Continuous innovation is essential to delivering long-term value and lasting success for our customers.

## Leading quality without compromise

Quality commitments only matter when they are consistently upheld. That makes delivering on those promises – product after product – a demanding standard. WINTERSTEIGER meets this standard through a quality-assurance approach that is both comprehensive and uncompromising.



# Custom solutions by WINTERSTEIGER

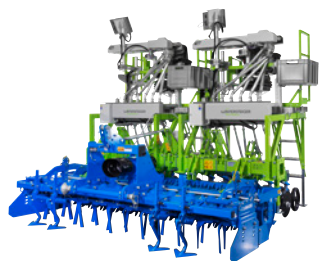
In addition to developing new technologies and continuously improving our machines, meeting individual customer requirements is a key part of our engineering focus. To support this, WINTERSTEIGER has built a dedicated team of engineers specializing in custom solutions and special customer projects. Over the past three years alone, this team has successfully delivered more than 100 customized solutions.



In-house developer team  
Workshop for special solutions in Ried  
Small batch production in the UK  
(TRIALS Equipment)

## Row Motion

Plot drill with rotary harrow.



## Quantum Plus

Plot combine with sunflower header.



## Quantum Plus

Plot combine with integrated straw scales.



## Quantum Pro

Plot combine with full track system.



## Split

8-row sunflower header.



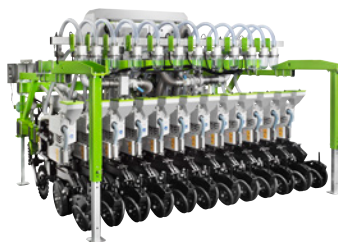
## Quantum Pro

Quantum Pro for one-person harvesting.



## Dynamic Disc Plus 12R

Precision spaced planter with field-plan specific individual row suction for large-scale plot trials.



# Global Sales & Service

## Delivery is just the beginning

The true value of an investment becomes clear in the years after delivery. That's why WINTERSTEIGER has established a world-wide after-sales service to support customers long after installation.

### Commissioning and training

WINTERSTEIGER supports commissioning and training through experienced service experts worldwide – both on site and through our global network.

### Proactive maintenance

Planned maintenance and the preventive replacement of defined wear parts at scheduled intervals help prevent issues before they occur, ensuring reliable operation and reduced downtime.

### On-call help desk

Our on-call help desk underscores WINTERSTEIGER's commitment to service excellence for partners worldwide. It provides reliable, first-class support – even outside standard business hours.

### Comprehensive guidance and training programs

WINTERSTEIGER regularly offers in-depth guidance and training programs for operating staff. These take place on site, at our headquarters in Austria, or through our agencies around the world. The training ensures confident machine operation and uninterrupted harvest – reducing downtime and lowering operating costs. WINTERSTEIGER service engineers and authorized agency technicians also receive continuous training and updates on new developments.

15 Wintersteiger sales and service sites

30 representatives around the world

More than 50 customer service technicians worldwide



# References & Partners

Excerpt from our list of references:



Bayer



You can find many more references online on our website.



# myWINTERSTEIGER

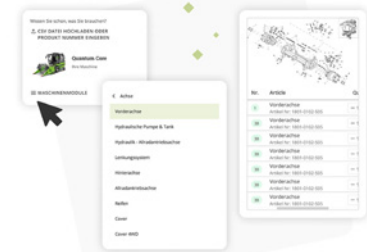
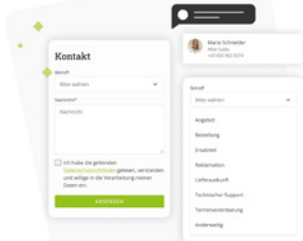
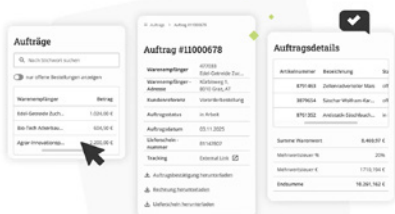
The digital service portal for your WINTERSTEIGER products.

myWINTERSTEIGER is free of charge!

Manage orders, machines, documents and spare parts easily online. Enjoy centralized, quick access around the clock.

## Your benefits:

- **Manage orders and receipts easily**  
Keep track of all orders and delivery documents. Track shipments and returns transparently at any time.
- **Find quick support and contact information**  
Your personal contact is just a click away. Submit support requests online or by phone.
- **Easily find spare parts and request a quote**  
Find the right parts for your machines and get a quote.



Get more information and request access to myWINTERSTEIGER



# JOIN US ON LINKEDIN

